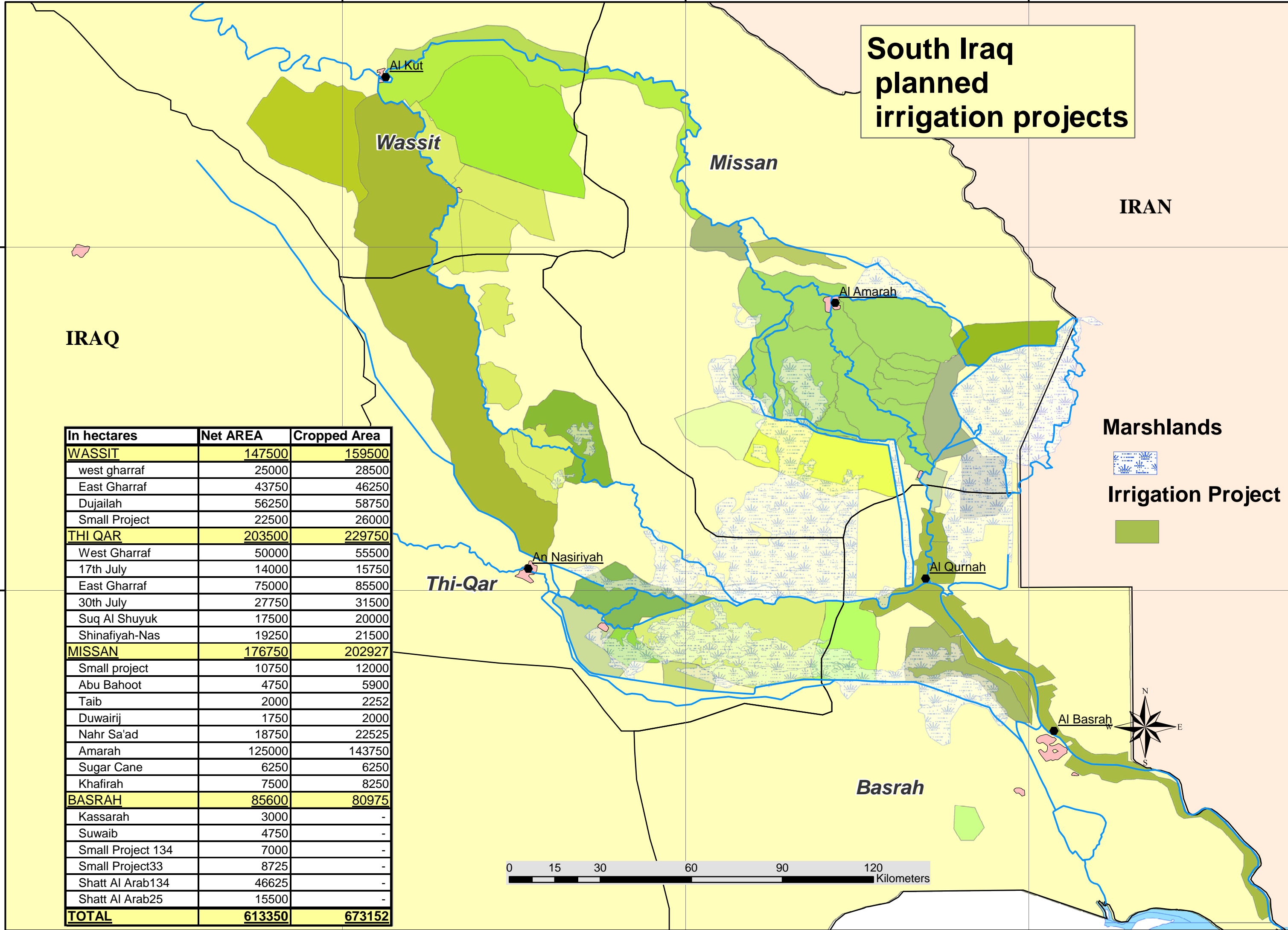


South Iraq planned irrigation projects



In hectares	Net AREA	Cropped Area
WASSIT	147500	159500
west gharraf	25000	28500
East Gharraf	43750	46250
Dujailah	56250	58750
Small Project	22500	26000
THI QAR	203500	229750
West Gharraf	50000	55500
17th July	14000	15750
East Gharraf	75000	85500
30th July	27750	31500
Suq Al Shuyuk	17500	20000
Shinafiyah-Nas	19250	21500
MISSAN	176750	202927
Small project	10750	12000
Abu Bahoot	4750	5900
Taib	2000	2252
Duwairij	1750	2000
Nahr Sa'ad	18750	22525
Amarah	125000	143750
Sugar Cane	6250	6250
Khafirah	7500	8250
BASRAH	85600	80975
Kassarrah	3000	-
Suwaib	4750	-
Small Project 134	7000	-
Small Project33	8725	-
Shatt Al Arab134	46625	-
Shatt Al Arab25	15500	-
TOTAL	613350	673152

